



# ITM WHANGAREI, WARKWORTH & MANGAWHAI COMBINED TRADES TOURNAMENT

31<sup>st</sup> Jan – 1<sup>st</sup> Feb 2026

Entry includes buffet dinner on prize giving night

**Entry Fee: Enter before 15<sup>th</sup> Dec Adult \$125, Junior (under 17) \$50**

**From 16<sup>th</sup> Dec: Adult \$145, Junior \$60**

TEAM NUMBER

Boat: .....  
Skippers Phone: .....

Skipper: .....  
Optional; Jackpot: \$100 ☐ \$250 ☐ \$500 ☐

Note: Anglers must be current financial members of the WDSAC or a club affiliated to the NZSFC

WDSAC Club Membership available:

**Senior** \$100.00

**Intermediate** (17 to 21 years) \$65.00

**Junior** (16 years & under) \$25.00

**Family** \$200.00

**Day** \$20.00 per day

**Seven Day** \$45.00

Team Member (1): .....  
Snr: ☐ Jnr: ☐  
Club: .....  
Renew Mship: ☐  
New WDSAC Mship: ☐  
Day Mship: ☐ Which Days: .....

Team Member (2): .....  
Snr: ☐ Jnr: ☐  
Club: .....  
Renew Mship: ☐  
New WDSAC Mship: ☐  
Day Mship: ☐ Which Days: .....

Team Member (3): .....  
Snr: ☐ Jnr: ☐  
Club: .....  
Renew Mship: ☐  
New WDSAC Mship: ☐  
Day Mship: ☐ Which Days: .....

Team Member (4): .....  
Snr: ☐ Jnr: ☐  
Club: .....  
Renew Mship: ☐  
New WDSAC Mship: ☐  
Day Mship: ☐ Which Days: .....

Team Member (5): .....  
Snr: ☐ Jnr: ☐  
Club: .....  
Renew Mship: ☐  
New WDSAC Mship: ☐  
Day Mship: ☐ Which Days: .....

Team Member (6): .....  
Snr: ☐ Jnr: ☐  
Club: .....  
Renew Mship: ☐  
New WDSAC Mship: ☐  
Day Mship: ☐ Which Days: .....

## DECLARATION

I declare that the above information is correct. I agree to carry out the instructions of the Club officials and accept their decisions as final and binding upon me and my crew. I indemnify the WDSAC against any losses, damages or untoward expenses caused or incurred by myself or my crew. As skipper, it is my responsibility to ensure that the vessel is capable of going to sea safely at all times. I consent to the collection of the details on this entry form by the WDSAC for event registration and promotion purposes and for it to retain, use and disclose these to the New Zealand Sport Fishing Council. (NZSFC) I acknowledge my right to access and correct this information. This consent is given in accordance with the Privacy Act 1993.

Skipper Signed: .....

## OFFICE USE

Entry Jnr Qty: ..... \$.....

Entry Snr Qty: ..... \$.....

Jackpot: \$100 ☐ \$250 ☐ \$500 ☐

Jackpot Total \$

Total Due \$

## OFFICE USE

Snr Mship Qty: ..... \$.....

Jnr Mship Qty: ..... \$.....

Inter Mship Qty: ..... \$.....

Family Mship Qty: ..... \$.....

Day Mship Qty: ..... \$.....

7 Day Mship Qty: ..... \$.....

# 2026 Whangarei Deep Sea Anglers Club Inc – ITM Whangarei, Warkworth & Mangawhai Combined Trades Tournament Disclaimer

I have entered into the above fishing competition. I understand and accept that it involves a certain degree of risk to be associated with fishing either landbased, from personal water craft or from any sized vessel.

Hazards that I could encounter whilst involved in this activity may include and is not limited to weather conditions, sea conditions, underwater obstructions, channel markers, other vessels, navigating, anchoring, traveling during darkness, mooring, and all other matters related to the sport of fishing and boating in general.

1. **Where possible it is recommended that all skippers should attend a tournament briefing.**
2. It shall be the responsibility of the Skipper to advise his/her crew/anglers of the information given at the briefing.
3. It shall be the responsibility of the Skipper to advise the correct authority of their intended fishing area and estimated time of return. It is the skipper's responsibility to determine that on any one day, the sea conditions and weather forecasts are safe for his/her boat.
4. In the event of an emergency on the water, participants are to notify their nearest Coastguard or radio operator.
5. All participants agree and accept:-
  - i. To enter this Tournament at their own risk;
  - ii. That boating and fishing involves a risk;
  - iii. Not to hold Tournament organizers, Officials, Sponsors or any other person involved with the Tournament liable for any loss or injury to person or equipment incurred during the Tournament;
  - iv. Notwithstanding any representations made, it shall be the responsibility of all participants to ensure that the provisions of all statutes, ordinances, regulations and by-laws related to (but not limited) to boating and fishing are complied with;
6. All participants agree to have read and understood the Tournament Rules.

## SKIPPER RESPONSIBILITY

- I have the necessary skill, knowledge and qualifications to safeguard all on board.
- My vessel & all equipment are properly maintained.
- My vessel carries the minimum legal & necessary safety equipment.
- We have a minimum of two means of communication; i.e. VHF marine radio, cellphone, flares.
- Each passenger has a correctly fitting buoyancy aid.
- My passengers are briefed on the location and use of all safety equipment.
- My vessel is loaded within its limit and all equipment is securely stowed.

I agree that neither The Whangarei Deep Sea Anglers Club Inc nor any parties associated with the event shall have any responsibility, financial or otherwise, for any risk incident that may arise, whether or not by negligence, from any direct or indirect loss, injury or death that might be sustained by me or my crew, from my intended or actual participation in the event or related activities.

I have made my crew aware of these conditions and have authority to sign on their behalf.

SKIPPER/BOAT OWNER

SIGNED: \_\_\_\_\_ NAME (Print) \_\_\_\_\_

## BOAT INFORMATION

Boat Type: \_\_\_\_\_ Name: \_\_\_\_\_

Length: \_\_\_\_\_ Colour: \_\_\_\_\_



**WARKWORTH**



**MANGAWHAI**



**WHANGAREI**



# ITM WHANGAREI, WARKWORTH & MANGAWHAI **COMBINED TRADES TOURNAMENT 2026**



## HOSTED BY WHANGAREI DEEP SEA ANGLERS CLUB

# WHANGAREI DEEP SEA ANGLERS CLUB

[office@wdsac.co.nz](mailto:office@wdsac.co.nz)

09-434 3818

[www.whangareideepseaanglersclub.co.nz](http://www.whangareideepseaanglersclub.co.nz)



## **ITM Whangarei, Warkworth & Mangawhai**

### COMBINED TRADES TOURNAMENT RULES

## **STATEMENT OF PURPOSE –**

Our Fishing Rules have evolved internationally so that, in their observance every fish should have a sporting chance. Captures in which the fish has not fought, or in which the fish has not had the chance to fight, on the gaff rope or at the boat, are not caught within the intent of our rules and do not reflect credit on the fish or the angler. Only fish caught within the Whangarei Deep Sea Anglers' Club & NZSFC Angling Rules, incorporating the IGFA Equipment and Angling Regulations, and within the intent of these rules will be recognised. We, as the Committee of the Whangarei Deep Sea Anglers' Club, reserve the right to call a witness boat to verify a catch.

## **ELIGIBILITY –**

**Anglers must be current financial members of the WDSAC or a club affiliated to the NZSFC.** A team may be comprised of any number of anglers but **if fishing from a boat there must be a minimum of 2 people on board.** If visiting anglers are not able to produce current membership cards, their membership will be checked through the secretary of their club. Failure to be a financial member of a club will result in disqualification from the contest. Team captains are responsible for this. **All fish are to be credited to WDSAC. ALL SKIPPERS MUST SIGN THE DISCLAIMER ATTACHED TO THE REGISTRATION FORM.**

**VHF channel 07 is a public channel – the use of this channel is a privilege and not a right.** Any team who is found to abuse this privilege by the use of extended offensive language or behaviour will be disqualified from the tournament and entry fees will not be refunded.

## **REGISTRATION & BRIEFING - EARLY ENTRY FURUNO PRIZE PACKAGE CUT OFF DATE – DECEMBER 15<sup>TH</sup> 2025**

Registration for the contest must be done prior to leaving Tutukaka. Boats may fish in to this tournament. Boats may leave from the Tutukaka Harbour immediately after briefing.

**The Briefing will be held at the WDSAC clubrooms on Friday evening 30<sup>th</sup> JAN at 7:30pm. 1 Team member MUST collect a starter pack before commencement of their days fishing. It is the responsibility of each Captain / Skipper to ensure your team receives your Contest Starter Pack and fully understands the rules of the tournament. There are items designated to each day so please ensure you have picked these up from the office prior to the event.**

## **CONTEST FEES –**

The contest fees are \$125.00 per Senior Angler (\$50.00 per Junior angler) Before 15<sup>th</sup> December Early Bird Price. From the 16<sup>th</sup> of December the contest fees are \$145.00 per Senior Angler (\$60.00 per Junior angler) and must be paid prior to the commencement of your own days fishing. Any alteration to teams listed on the entry forms must be notified and paid prior to your start of the day's fishing.

## **AREA TO BE FISHED –**

Northern Boundary bearing North East of Cavalli Light, Southern Boundary Latitude 36° (Cavalli Islands in the north to Sail Rock/Simpson Rock in the south) MAGNETIC. Please observe all Marine Reserve Regulations.

## **THIS IS A STAY AWAY TOURNAMENT – ANY BOAT MAY FISH INTO THIS TOURNAMENT & STAY AWAY SATURDAY NIGHT.**

**You may stay overnight outside the fishing boundary but you must return before you start fishing the following day.**

## **SNAPPER & YELLOWTAIL MEASURE SECTION –**

Please see additional Snapper & Yellowtail Measure rules in your starter pack to correctly measure your fish. All Measure Photos MUST be on the ITM Measure Mat Provided.

# START & STOP FISHING RULES

## Start Fishing:

- 6:30am both days — No baits, lures, teasers, dredges, berley, or any fishing equipment may enter the water before this time.
- **Any teams found fishing before Start Fishing on either day will be disqualified from the tournament.**

## Stop Fishing:

- Saturday: 7:00pm
- Sunday: 4:00pm
- All baits, lures, lines, teasers, dredges, and game fishing gear must be out of the water by these times.
- **There is strictly NO FISHING after Stop Fishing on both days.**

## HOOK-UPS

- Any hook-up must be reported to Tutukaka Gamebase as soon as possible.
- Hook-ups must be called in before Stop Fishing each day.
- o *Any fish called in after Stop Fishing will be disqualified.*

## IMPORTANT – PRE-START FISHING RESTRICTIONS

### **No form of fishing may commence prior to 6:30am on the 31<sup>st</sup> & 1<sup>st</sup> , including:**

- No bait catching ( *You may only use bait caught the day before* )
- No berley to enter the water.
- No teasers, dredges, lures, or other fishing gear (including sonar) to enter the water.
- o *Bait can be brought from a shop prior to 6:30am.*

## **SCORING**

The contest will be divided into eight sections: TEAM MOST POINTS OVERALL MARLIN (*landed and tagged Marlin only*) – ANGLER PRIZE HEAVIEST MARLIN 1<sup>st</sup> & 2<sup>nd</sup> *Marlin only* - TEAM PRIZE TAG & RELEASE MARLIN *Marlin only* DRAW PRIZE – TEAM MOST POINTS BROADBILL 1<sup>st</sup> & 2<sup>nd</sup> – ANGLER HEAVIEST YELLOWFIN, BIG EYE or BLUEFIN TUNA – HEAVIEST MAHIMAHU – HEAVIEST SHORTBILL SPEARFISH – LONGEST YELLOWTAIL – LONGEST SNAPPER – AVERAGE LENGTH YELLOWTAIL – AVERAGE LENGTH SNAPPER

Points will be awarded for landed gamefish on the basis of one point per kilo for fish weighed, regardless of line weight. Tag & Release Tagged Marlin DRAW! This will be a draw between all tagged marlin, all tagged fish will enter the draw for this prize 1 fish = 1 entry into the draw

**Multiple Hook Ups** - Under IGFA rules.

## **TAG & RELEASE**

Each Tag & Release Marlin & Broadbill will be awarded 120 points and the prizes for Tag & Release Marlin & broadbill are separate team prizes. When a fish is tagged, the tag card must be filled in and handed to the weighmaster with a completed catch sheet and the tag number recorded on the catch sheet. The Angler must also present the Rod, Reel and tackle with which the fish was caught. The weighmaster may also request to inspect the Tag Pole – Maximum length 3.66m. **ALL Tag & Release Marlin & Broadbill must be accompanied by photographic evidence and be presented to the Weighmaster. If sufficient photographic evidence is not provided, the fish will simply be disqualified. The decision made by the Contest Committee in this respect will be final and no further discussion or correspondence will be entered into.**

## **Photographic Evidence**

Your photo or video **must** capture **the tag in the fish & the days ribbon colour**. When you call in your tagged fish the radio operator will advise you of **a clearance photo** – this will be a random photo that you need to take to present at the weighstation together with the tag in the fish photo. The clearance photo for when the office is closed Saturday evening 6.00pm – 7.00pm will be advised before the office closes.

It is essential that you call in your catch to Tutukaka Gamebase over the VHF or phone as soon as possible – this will be recorded as the time of capture (according to the tournament clock). Tutukaka Gamebase will be operating on VHF Channel 7 - Phone - 09 4343818

The Contest Starter Pack will contain different coloured ribbons. During the Briefing and again over the VHF radio at start fishing, the colour for Day 1 will be announced. Your photo or video **must** capture **the tag in the fish and the coloured ribbon designated to that day**. It is recommended that the coloured ribbon is taped to your tag pole so that it's very easy to capture the Coloured ribbon and the Tag in the fish.

When calling in your tagged fish please provide the tag number. In the event of a **tie**, the winning team will be the team amassing their points first based on the time of capture as recorded by Tutukaka Gamebase (according to the tournament clock).

There is **no** Tag & Release section for any other species except Marlin & Broadbill

## **MINIMUM WEIGHTS & LENGTHS** –

MARLIN & BROADBILL 75kg, if caught on 15kg & over - TUNA 15kg - SHORTBILL SPEARFISH 10kg - MAHIMAHU 5kg –

YELLOWTAIL minimum LENGTH 100cm - SNAPPER minimum LENGTH 50cm –

You may catch your daily limit as per NZ catch limits



## **WEIGH IN**

**On Saturday 31<sup>st</sup> fish may be weighed between the hours of 4:00pm to 8:00pm at the ITM Whangarei, Warkworth & Mangawhai Tutukaka Weigh Station.** There is NO requirement for a fish to be weighed or tag information to be presented at the weigh station the same day it is caught. All fish and tag information must be at the weigh station by the cut off time stated on the final day

**On Sunday 1<sup>st</sup> all catch sheets, including tag cards, measure photos and contest fish must be at the ITM Whangarei, Warkworth & Mangawhai Tutukaka weighstation waiting to be weighed in by 5.30pm,** unless the fish is being played at Stop Fishing time. If a fish is still being played at Stop Fishing catch sheets, including tag cards and contest fish must be presented at the weighstation by 6:30pm to qualify for the tournament – no exceptions.

If the fish and/or tag cards are not at the weigh station by the specified times then the catch will not count for the tournament. Being within the 5 knot zone off Tutukaka Marina entrance constitutes being at the weigh station. However, we will also accept fish that are delivered to the weigh station at the roadside providing the fish is in the boat and the time limits for this tournament are observed.

All boats weighing fish, or presenting tag details, must call Tutukaka Gamebase when entering the harbour. All catches are to be weighed on the official scales at Tutukaka by an official weighperson/s designated by the WDSAC. Each angler must fill in a catch form declaring that the catch was made in accordance with the contest rules. **Catch sheets must be filled in before fish are presented at the scales.** All details must be CLEARLY entered and the form passed to the weigh master immediately on arrival at the ITM Whangarei Warkworth & Mangawhai Tutukaka weighstation. **For all catches, the angler must present the Rod, Reel and tackle with which the fish was caught.** The Weighmaster may also request to inspect the Gaff and/or Tag Pole. You may cut the leader on a fish if the hook can not be removed however you must be able to provide sufficient evidence that the hook and leader comply to the rules.

**All fish are to be credited to WDSAC.**

## **RADIO ROUND UP**

A Round-up will be broadcast on VHF 07 at 3.00pm on Saturday and 2.00pm on Sunday. When answering sked calls you must give a grid map reference name (as supplied) and a result report of: number of strikes, hook-ups and successful catches (or T&R). PLEASE USE YOUR TEAM NUMBER AND BOAT NAME WHEN CALLING THE OFFICE, IT IS VERY IMPORTANT.

## **TACKLE**

All tackle must be in accordance with the WDSAC and IGFA Rules but line weight shall not exceed 60kg. In all matters not specifically covered, IGFA Equipment and Angling Regulations shall apply. WDSAC has adopted IGFA Equipment Regulation A 4, which specifies as follows: "The catch shall be classified under the breaking strain of the first five metres of line directly preceding the double line, leader or hook. In other words, the first five metres of main line determines the line class used.

An IGFA or NZSFC handbook will be provided

**SONAR USE PROHIBITED** - The use of sonar and omni-sonar equipment is prohibited.

**BAD WEATHER** - In the event of unfavourable weather conditions, the Contest Committee reserves the right to cancel fishing for the day.

**PROTESTS** - Any protest concerning the validity of any catch shall be filed in writing and signed by the plaintiff no later than 7.00pm the same day (or no later than 6.00pm on the last day of the tournament). In the case of a protest the Contest Committee's decision is final and no correspondence will be entered into.

**PRIZEGIVING**- The Prizegiving will be held in the clubrooms at 7.00pm on Sunday night in conjunction with the Bonze Skins Tournament. The distribution of prizes within your team is the team's responsibility. Set the ground rules now as the Club will not get involved in your domestic differences.



## **OFFICE HOURS**

The Office will be open from 6.00am to 7.00pm each day of the contest.

## **TIME TABLE**

Briefing	30/01/2026 – Friday 7:00pm
Day 1 start fishing	31/01/2026 - Saturday 6:30am
Day 1 stop fishing	31/01/2026 - Saturday 7:00pm
Weigh Station cut off time	31/01/2026 – Saturday 8:00pm
LIVE MUSIC 6pm ONWARDS 31/01/2026	
Day 2 start fishing	01/02/2026 – Sunday 6:30am
Day 2 stop fishing	01/02/2026 – Sunday 4:00pm
Weigh Station cut off time	01/02/2026 – Sunday 5:30pm
Prizegiving	01/02/2026 – Sunday 7:00pm

## **GENERAL INFORMATION**

### **BERTHAGE**

Contact Tutukaka Marina Office, Telephone 09 4343441 if you require a berth.

### **BAIT & ICE**

Ice is available from the Office and/or Bar. Bait is available at the Ngunguru or Tutukaka Store.

### **TOILETS**

Please DO NOT use the boat toilet when in the Marina, **use the onshore facilities** - there are plenty of them.  
**Thank you!**

### **WATER**

Available on all Marinas and floating pontoons. Please don't waste water. Turn off hose at tap - not nozzle.

### **RUBBISH**

Please keep our harbour and oceans clean. Bring all rubbish back to port. Use rubbish receptacles provided by each Marina.

### **SHOWERS**

Showers are situated behind the Clubrooms and in the Marina Office block (CODE required please purchase this from the WDSAC bar or ring the marina office 09 4343441). Don't forget your towel and soap.

**TUTUKAKA COASTGUARD** - The Coastguard channel is **VHF 62** for trip reports.

### **CALLING IN YOUR CAUGHT OR TAGGED FISH THE FOLLOWING INFORMATION IS REQUIRED**

**FISH, ANGLER, TEAM NUMBER, BOAT, EST. WEIGHT FOR TAGGED FISH, LINE WEIGHT, TAG NUMBER IF TAGGED, LURE TYPE & AREA** - Our Sponsors are important to us so please use our Sponsors Area Names.

## **OVERALL SECTION PRIZE LIST**

**TEAM MOST POINTS OVERALL MARLIN**  
(landed and tagged Marlin only)

1<sup>st</sup> team prize only **\$30,000 cash sponsored by ITM Whangarei, Warkworth & Mangawhai, COMMERCIAL DIESEL LTD & CASTROL**

In the event of a tie/ties, the winning team will be the team amassing their points first based on the earliest time of capture ie, the time the Marlin was boated or tagged, as recorded by Tutukaka Gamebase (according to the tournament clock).

It is essential that you call in your catch over the VHF just as soon as possible as this will be recorded as the time of capture (according to the tournament clock).

**HEAVIEST MARLIN**

1<sup>st</sup> Team Prize **\$10,000 CASH** Sponsored by **COMMERCIAL DIESEL LTD & CASTROL & ROSS REID CONTRACTORS**

& 2<sup>nd</sup> 3<sup>rd</sup> Team Prizes

**BROADBILL MOST POINTS**

1<sup>st</sup> & 2<sup>nd</sup> Team Prizes

**TAG & RELEASE MARLIN DRAW**

**1<sup>st</sup> Team prize DRAW - \$2500 CASH**  
**Sponsored by Allquip Field Service**

Tag & Release Tagged Marlin DRAW! This will be a draw between all tagged marlin, all tagged fish will enter the draw for this prize 1 fish = 1 entry into the draw

**HEAVIEST YELLOWFIN, BIG EYE, OR BLUEFIN TUNA**

1<sup>st</sup> Angler prize only (to be decided by lucky draw if not won)

**HEAVIEST SHORTBILL SPEARFISH**

1<sup>st</sup> Angler prize only (to be decided by lucky draw if not won)

**HEAVIEST MAHIMAHI**

1<sup>st</sup> Angler prize only (to be decided by lucky draw if not won)

**LONGEST YELLOWTAIL OVERALL**

**1<sup>st</sup> \$5000 CASH, 2<sup>nd</sup> & 3<sup>rd</sup> Angler prizes only** (to be decided by lucky draw if not won)

**LONGEST SNAPPER OVERALL**

**1<sup>st</sup> \$5000 CASH, 2<sup>nd</sup> & 3<sup>rd</sup> Angler prizes only** (to be decided by lucky draw if not won)

**AVERAGE LENGTH SNAPPER**

1<sup>st</sup> \$1000 CASH & Prize Pack

**AVERAGE LENGTH YELLOWTAIL**

1<sup>st</sup> \$1000 CASH & Prize Pack Sponsored by HCB Technologies

1st tagged marlin for each day will receive an Shimano 80w set up sponsored by McKenzie Civil Contracting Ltd

ANY CASH PRIZES NOT WON WILL ROLL OVER TO THE FOLLOWING YEAR

# SNAPPER &

# YELLOWTAIL RULES

## MEASURING YOUR CATCH CORRECTLY -



A clear photograph of the fish, correctly placed on the measure, is critical for your entry into the competition. It is your responsibility to ensure you provide an image that we can use to validate your entry. Place your fish on a measure as shown above and take one or more digital photographs that clearly shows the whole fish, placed side-on, on the measure with either the upper or lower jaw touching the edge of the measure mat or tape measure. Please take your photo in **landscape** format as a portrait photo can be difficult to assess and your catch may be declined.

**ENSURE THAT YOU HAVE THE TOURNAMENT RIBBON IN THE SAME PHOTO – 2026 RIBBON COLOUR WILL BE ANNOUNCED ON THE DAY**

Ensure the V of the tail is clearly visible and as close to the midline of the measure as possible. Take the photo from directly above the fish looking down on it rather than from the front or side. For your entry to be valid it's critical you take a good clear photo that complies with our rules. Your photo is the only way we can validate your entry so please make it a good one and take several just in case.

## HERE ARE SOME OF THE THINGS THAT CAN GO WRONG WITH PHOTOS:

- Image not focused (length can't be verified).
- Image doesn't show the whole fish on the measure (length can't be verified).
- Shadows - strong shadows may mean we can't verify the length. Photos are better taken in light shade with no shadow if possible, or use a fill-in flash.
- Fish is gilled, partly gilled or gutted - entry may be declined or reduced in measurement
- Photos should be taken as close to above the fish as possible. The rule of 'feet' applies - if you stand over and look down on the fish and your feet are in the shot, you're in the right position!

## DEFECTIVE PHOTOGRAPH ENTRY EXAMPLES





# YOUR ENTRY SHOULD LOOK LIKE THIS PHOTO



## CHECKLIST

- PHOTO MUST INCLUDE THE DAYS RIBBON COLOUR
- YOU MUST USE THE ITM MEASURE MAT PROVIDED FOR ALL MEASURE PHOTOS
- Make sure the photo is of sufficient quality and suitable to enable the species and length to be verified.
- The photo submitted must be in landscape format.
- Take several photos just in case. Shadows can cause problems if the fish is placed in part sun/part shadow.
- The tip of either the upper or lower jaw must touch the edge of the end of the measure. It is permissible to place a hand on your fish or have someone hold the fish on the measure, or use a damp cloth on the fish to settle it while a photo is taken, provided this does not obscure the fish significantly or prevent WDSAC/Tournament administrators from being able to validate your catch.
- The V of the tail should be as close to the midline of the measure as possible.
- The measure must be placed on a flat surface.
- The jaw of the fish must not be distorted in an attempt to exaggerate the length and the tail must sit naturally on the measure. If the jaw has been extended or the tail appears to have been squeezed together, the catch may be declined or a deduction in length may be made at the sole discretion of the tournament committee.

- Please note that your fish may not be eligible for entry to the Combined Trades Tournament if the above conditions are not met. The Tournament Committee reserve the right to accept an entry on the basis that an appropriate reduction in length is made for any non-compliance and/or the Tournament Committee also reserve the right to disqualify any catch at their sole and absolute discretion for any reason whatsoever including, but not limited to, suspected measure tampering and false date submissions.

## **HOW IS THE LENGTH DETERMINED?**

For species with a V tail, the innermost point of the V must touch or exceed the line on the measure to qualify for that 0.5cm increment. For example, if your fish is just over 40cm but does not reach the 40.5cm mark then the length recorded will be 40.0cm. For species with a straight or convex tail the measurement will be the point where the middle of the tail touches the measure. Please ensure your fish is placed so the tail is evenly spread and the middle of the tail is along the midline of the measure.

## **PRESENTING YOUR MEASURE PHOTOS -**

**You must present your catch card filled out in full for each fish, measure photo & tackle, to the weigh station by the cut off time on the last day of fishing stated in the rules.**

**Goodluck!**

# ITM Whangarei, Warkworth & Mangawhai

## COMBINED TRADES TOURNAMENT

### ***Champion Team Billfish Points Jackpot***

Voluntary prize competition – Back your team to win CASH \$\$\$\$\$\$

#### **Eligibility**

- ✳ Your team must be entered in the ITM Whangarei, Warkworth & Mangawhai Combined Trades tournament to be eligible to enter this competition.
- ✳ The team with the most points Champion Team Billfish will win the Jack Pot- 1st place 90% of Jackpot purse (if entered) - (remaining 10% allocated to administrative fees)
- ✳ **All other angling rules** for the ITM Whangarei, Warkworth & Mangawhai Combined Trades tournament will apply.

#### **Fees**

- ✳ The fee for the jackpot is split into 3 sections - \$100 - \$250 - \$500 - (only one entry per team for each category).
- ✳ Fees must be paid in full, preferably by cash on briefing night, but otherwise by no later than start fishing on the first tournament day. Failure to do so will result in your entry being removed.
- ✳ If there are no Marlin Caught for the tournament then each jackpot prize pool will be a lucky draw between jackpot entrants.

#### **Prize Pool**

- ✳ The maximum prize pool will of course be dependent on the number of teams entered in each jackpot category.
- ✳ As an example \$100, \$250, \$500 you could have a purse of “34K” if you had 40 teams and they all entered each jackpot.
- ✳ In the event of a tie/ties, the winning team will be the team amassing their points first based on the earliest time of capture A list of all teams entered in the Billfish Jackpot – Will be made available as soon as possible after entries close.

#### **Prizegiving**

- ✳ The winner/winners will be announced at the final ITM Whangarei, Warkworth & Mangawhai Combined Trades tournament prizegiving and the prize will be awarded to the team representative/s on that night.

SEE NEXT PAGE FOR MORE INFORMATION



# JACKPOT EXAMPLE

If you would like to enter the jackpot – Prior to briefing your team will need to decide if you would like to enter one, two or three of the jackpot categories.

To win the jackpot you must have the most points in that category.

If the team/team's with most points has not entered into a jackpot, the prizes will shift down to the next highest points scoring team or teams that are entered into the Jack pot category.

Jack Pot Example				
Category	JP 1	JP 2	JP 3	Potential Total
Buy In	\$ 100.00	\$ 250.00	\$ 500.00	\$ 850.00
Team				Total Entered \$
Team 1	\$ 100.00			\$ 100.00
Team 2	\$ 100.00	\$ 250.00	\$ 500.00	\$ 850.00
Team 3				
Team 4		\$ 250.00		\$ 250.00
Team 5	\$ 100.00			\$ 100.00
Team 6	\$ 100.00	\$ 250.00		\$ 350.00
Team 7			\$ 500.00	\$ 500.00
Team 8	\$ 100.00			\$ 100.00
Team 9	\$ 100.00			\$ 100.00
Team 10		\$ 250.00		\$ 250.00
Total for each JP	\$ 600.00	\$ 1,000.00	\$ 1,000.00	
Theoretical results				
Team	Points	JP 1 - \$600	JP 2 - \$1000	JP 3 - \$1000
Team 1	240			
Team 2	120			Team 2 - 120 Points
Team 3	360	Team wins most points - \$20k Cash prize but no jackpots		
Team 4	120			
Team 5	250	Team 5 - 250 Points		
Team 6	125		Team 6 - 125 Points	
Team 7	90			
Team 8	120			
Team 9	120			
Team 10	120			
	Indicates the winner of each jackpot			

WHANGAREI DEEP SEA ANGLERS CLUB INCORPORATED

# RADIO & TOURNAMENT RULE BREACH POLICY

---

Whangarei Deep Sea Anglers Club Angling rule breach / Cheating policy, if cheating is discovered after the tournament but within the same season, all prizes and trophies will be forfeited if possible, and a ban of up to five years will be imposed for ALL team members for all WDSAC tournaments. Additionally, all Northland clubs will be notified.

If caught abusing your radio privileges that same penalties will apply.

---

## WHANGAREI DEEP SEA ANGLERS CLUB WILL TAKE THE FOLLOWING STEPS:

---

1. **Verification:** The first step is to thoroughly verify the disqualification. This may involve reviewing photographic evidence, witness statements, or other documentation to ensure the accuracy of the decision.
2. **Communication:** The angler and all team members who are caught should be promptly informed of the decision. Clear and respectful communication is essential to avoid misunderstandings.
3. **Penalties:** The penalties for rule violations will be determined by the Whangarei Deep Sea Anglers Club Committee depending on the severity of the rule violation. These penalties all prizes and trophies will be forfeited if possible, and a ban of up to five years will be imposed for all team members for all WDSAC tournaments. Additionally, all Northland clubs will be notified.
4. **Appeals Process:** If the angler believes there has been an error in the disqualification decision, they may have the right to appeal. They will be asked to present additional evidence or arguments to contest the decision.
5. **Rule Review:** After a disqualification Whangarei Deep Sea Anglers Club may conduct a review of their rules and regulations. If necessary, Whangarei Deep Sea Anglers Club may consider updating or clarifying rules to avoid similar issues in future tournaments.

# THANK YOU VERY MUCH TO OUR NAMING RIGHTS SPONSOR

## ITM WHANGAREI, WARKWORTH & MANGAWHAI COMBINED TRADES TOURNAMENT 2026

**WHANGAREI**



17/4 KIOREROA ROAD, WHANGAREI

p: 09 437 9420

e: [sales@whangareiitm.co.nz](mailto:sales@whangareiitm.co.nz)

**WARKWORTH**



16 STATE HIGHWAY 1, WARKWORTH

p: 09 425 1021

e: [sales@warkworthitm.co.nz](mailto:sales@warkworthitm.co.nz)

**MANGAWHAI**



188 MOLESWORTH DRIVE, MANGAWHAI

p: 09 431 4963

e: [sales@mangawhaiitm.co.nz](mailto:sales@mangawhaiitm.co.nz)

# ITM WHANGAREI, WARKWORTH & MANGAWHAI COMBINED TRADES TOURNAMENT 2026

## ITM VALUES

### We're more than Timber and Tools.

We're a nation-wide network of passionate, knowledgeable, and straight-up people. We're hands on, switched on, and on call to help our trade customers however we can. We're the same ITM we always have been. Making building easier in our communities. We're ITM and we'll see you right.

WHANGAREI



WARKWORTH



MANGAWHAI



## COMMUNITY SUPPORT AND SPONSORSHIP

### SUPPORTING OUR COMMUNITY

Supporting local communities has always been a part of our DNA at ITM. Most of our 92 stores around Aotearoa support a local club, school or a charity-based organisation through sponsorship.

Our sponsorships are about more than just donating money though. They're about helping uplift the communities that we live in. We're pleased to showcase some of our stores' incredible work in their local communities.

LOCALS  
*Supporting*  
LOCALS

**A VERY BIG THANK YOU TO OUR  
OTHER MAJOR TOURNAMENT  
SPONSORS  
COMBINED TRADES TOURNAMENT  
2026**



**ROSS REID CONTRACTORS**



**COMMERCIAL DIESEL LTD**



**CASTROL NZ**



**FURUNO NZ & BONZE LURES**

**THANK YOU**





**Commercial Diesel Ltd**

**Ph: 09 425 8456** (Warkworth)

**09 438 6915** (Whangarei)

**COVERING HEAVY TRANSPORT -  
Service, repairs, maintenance  
from Silverdale North**



**AUTHORIZED CASTROL AGENTS**

**Warkworth 09 425 8456**

**Whangarei 09 438 6915**

**Kerikeri 09 407 5514**





At Castrol, we're breaking boundaries and moving forwards on a pathway of change. Embracing the new to accelerate progress.







Ross Reid Group have been in the construction industry since 1954 and currently own 400+ items of plant and equipment. This plant ranges in size from a D4 to D375 Bull Dozer, Cat 615 to Cat 637 Motor scrapers, Cat 730 & Cat 740 Dump Trucks, GPS controlled Graders, Rollers and Cat 305 to Cat 345 Excavators and have the service resources to maintain these equipment and plant.

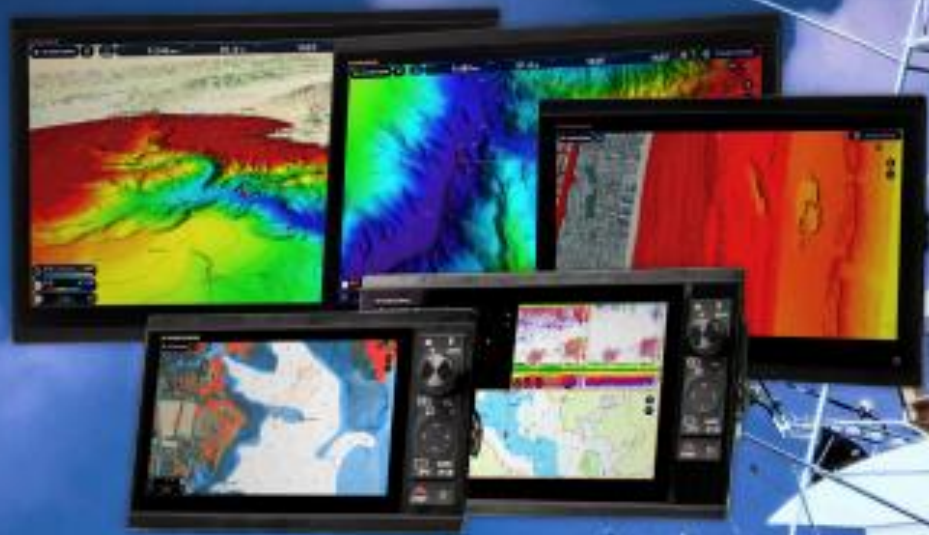
Ross Reid Contractors are competent civil works contractor, and are AS/NZS ISO 9001:2016 registered and AS/NZS ISO 14001:2015 accredited contractor.

We believe we can offer value engineering solutions to ensure our clients are given a fair price for a quality product that better or achieves their goals and targets. Ross Reid's also have a philosophy of partnering and work with the client to achieve their goals.

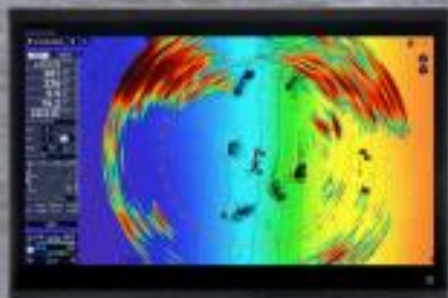
Working with client and consultants in the early stage of the projects and many projects involved partnership arrangements with the clients to deliver the project from preliminary design to final completion.



# FURUNO



## WHEN YOU'RE SERIOUS



OMNI SONAR INTEGRATION WITH

**CSH10**  
OMNI SCANNING SONAR

**NAVnet**

**TZ**  
touch XL



For more info  
contact the friendly  
team @ ENL

[enquiries@furuno.co.nz](mailto:enquiries@furuno.co.nz)  
09 373 5595



Photo Credit @Clementgolaz

# BONZE



LURE IT. LIVE IT. LAND IT.



WELCOME TO THE WORLD OF BONZE LURES ★ JOIN THE MOVEMENT  
★ **LIVING THE DREAM** ★ IT'S ABOUT CHASING THE ADVENTURE ★  
HEADING INTO THE UNKNOWN ★ **GETTING OUT ON THE OCEAN** ★ IT'S ABOUT  
ENJOYING THE FREEDOM ★ JUST YOU & YOUR MATES ★  
EXPERIENCING THE RUSH ★ IT'S ABOUT WHAT MAKES US FEEL ALIVE!